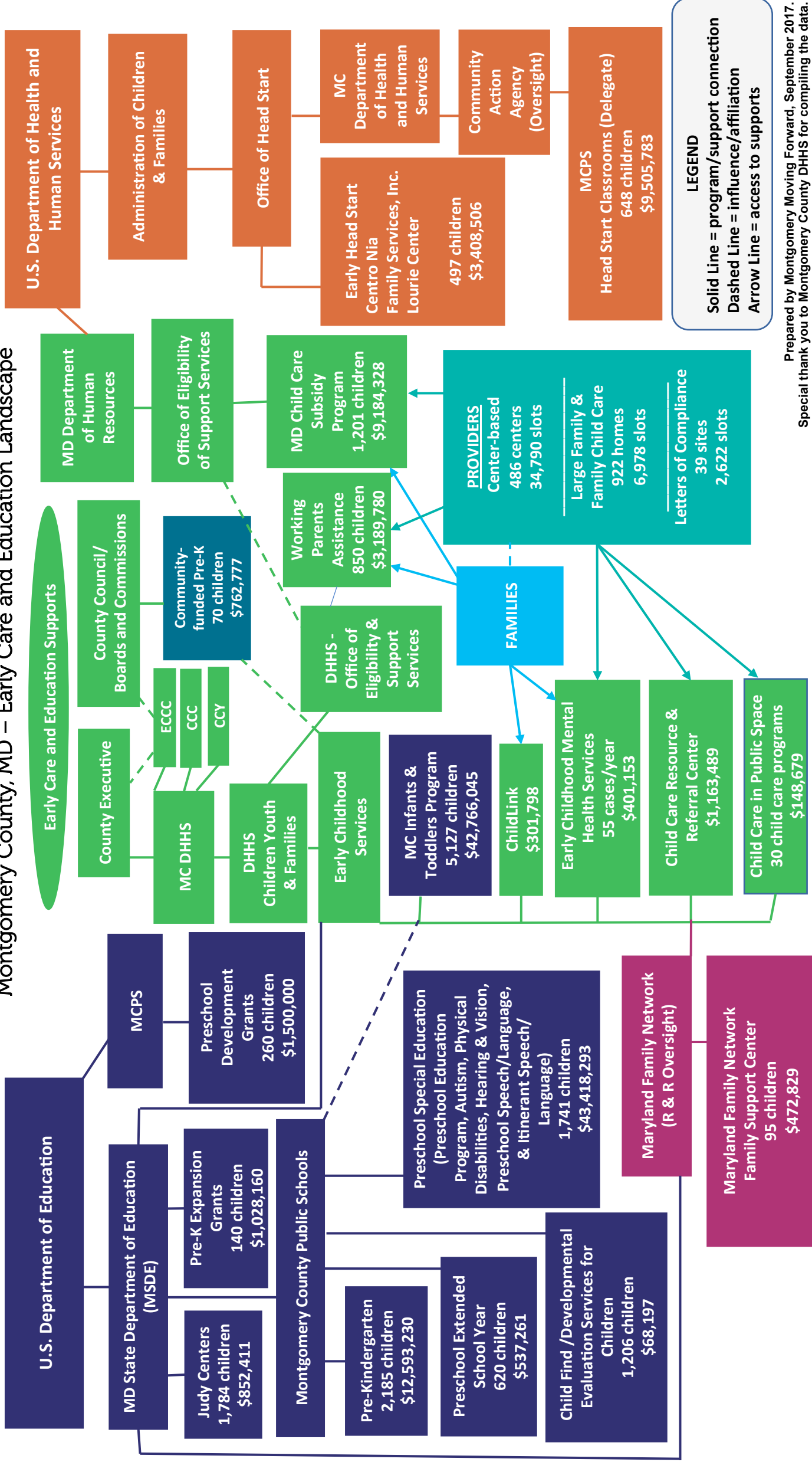


Montgomery County, MD – Early Care and Education Landscape



Regulated Child Care Options in Montgomery County, MD



1

Child Care Centers

486 centers
34,790 slots

2

Large Family Child Care Centers & Family Child Care Centers

922 homes
6,978 slots

3

Letters of Compliance (LOC) Religious Organizations

39 sites
2,622 slots

Unregulated Child Care Options

Unlicensed
Care

Informal Care
(care by a family member)

Hired Nannies
& Au Pairs

Child Care is defined as the care or supervision of a child when the child's parent has given the child's care over to another for some portion of a 24-hour day as a supplement to the parent's primary care of the child.

- 1 Child Care Centers** - Child care provided in a facility that, for part or all of the day, provides care to children in the absence of the parent. Centers are licensed by the Maryland State Department of Education (MSDE) Office of Child Care (OCC). Programs that are licensed or otherwise authorized to provide child care services in a non-residential setting.
- 2 Large Family Child Care Centers & Family Child Care Centers** - Care given to a child younger than 13 years old or to a developmentally disabled person younger than 21 years old, in place of parental care for less than 24 hours a day, in a residence other than the child's residence and for which the provider is paid. Family child care is regulated by the Maryland State Department of Education (MSDE)/Office of Child Care.
- 3 Letters of Compliance** - Legally operating child care that is exempt from the regulatory system of the state or community. Per state code 13A.17, a letter of compliance is a form of licensure that exempts the facility from having to meet certain staff qualification and program requirements. To be eligible for a Letter of Compliance (LOC) the program must be operated by a tax-exempt religious organization in school buildings exclusively for children who are enrolled in those schools.

Children Under Age 5 in Montgomery County

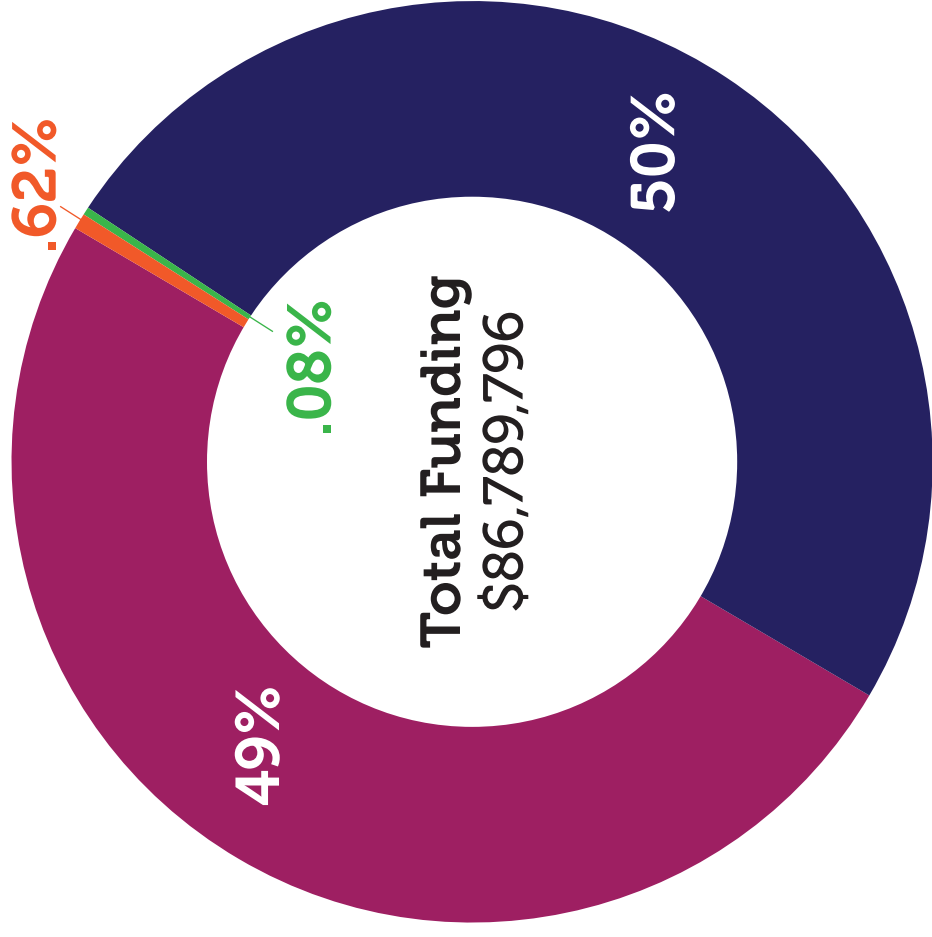
2010	63,732	2025	69,572
2015	66,557	2030	71,887
2020	65,948	2035	73,598

2010: U.S. Census; 2015: U.S. Census American Community Survey
2020 to 2035 projections: Maryland Department of Planning

Services and Funding for Children with Disabilities

- MCPS Preschool Special Education** (1,741 Children)
 Federal: \$982,052 / Local: \$42,436,241
 Total: \$43,418,293 – 49%
- DHHS Infants & Toddlers Program** (5,127 Children)
 Federal: \$5,803,709 / Local: \$34,741,455 / State: \$2,220,881
 Total: \$47,766,045 – 50%
- MCPS Extended School Year** (620 Children)
 Local: \$537,261 – .62%
- MCPS Child Find** (1,206 Children)
 Local: \$68,197 – .08%

Total Served: 8,694



All information is based on FY17 data.
 Prepared by Montgomery Moving Forward, September, 2017.
 Special thanks to Montgomery County DHHS for compiling the data.

Services and Funding for Low Income Families

Child care subsidies to help parents pay for care

- **Child Care Subsidy Program*** (1201 Children)
State/HDR: \$9,184,328 - 22%
- **Working Parent Assistance Program*** (850 Children)
Local: \$3,189,780 - 8%

Programs for four year olds

- **DHHS Head Start** (648 Children)
Federal: \$7,379,246 / State: \$42,436,241 / Local: \$1,899,465
Total: \$9,505,783 - 22%

- **County-funded PreKindergarten (CentroNia)** (70 Children)
Local: \$762,777 - 2%

- **MCPS PreKindergarten** (2,185 Children)
State/MSDE: \$12,593,230 - 30%

- **MCPS PreKindergarten Expansion** (140 Children)
Federal/USDE - \$1,028,160 - 2%

- **Preschool Development Grants** (260 Children)
Federal/USDE: \$1,500,000 - 22%

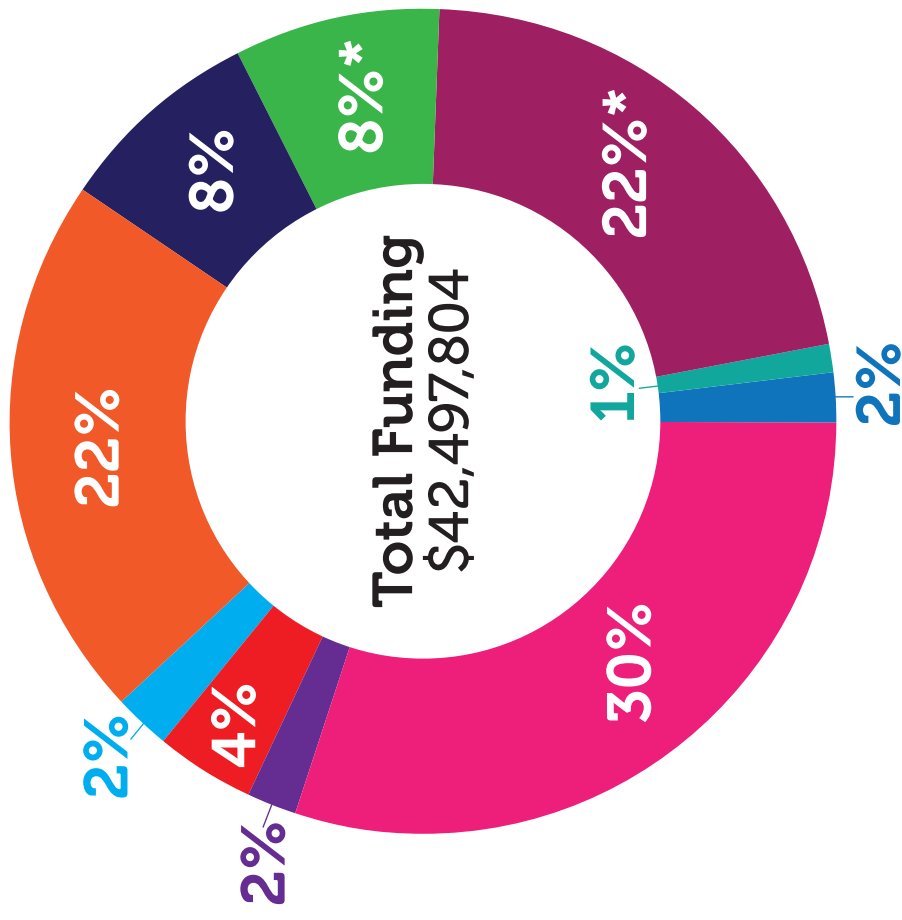
Two generation support programs

- **Early Head Start** (497 Children)
Federal/USDHHS: \$3,408,506 - 8%

- **Judy Centers** (1784 Children)
State: \$644,000 / Local: \$125,917 / Other (in-kind): \$82,494
Total: \$852,411 - 2%

- **Maryland Family Network / Family Support Center** (95 Children)
Federal: \$27,000 / State: \$250,000 / Local: \$195,829
Total: \$472,829 - 1%

Total Served: 7,730



*These funds used by families to pay for child care.

Services and Funding for Child Care Providers and Families

- **DHHS Child Care Resource and Referral Center**

State/MSDE: \$199,692 / Local: \$963,797
Total: \$1,163,489 – 58%

- **DHHS Early Childhood Mental Health Consultation Services**

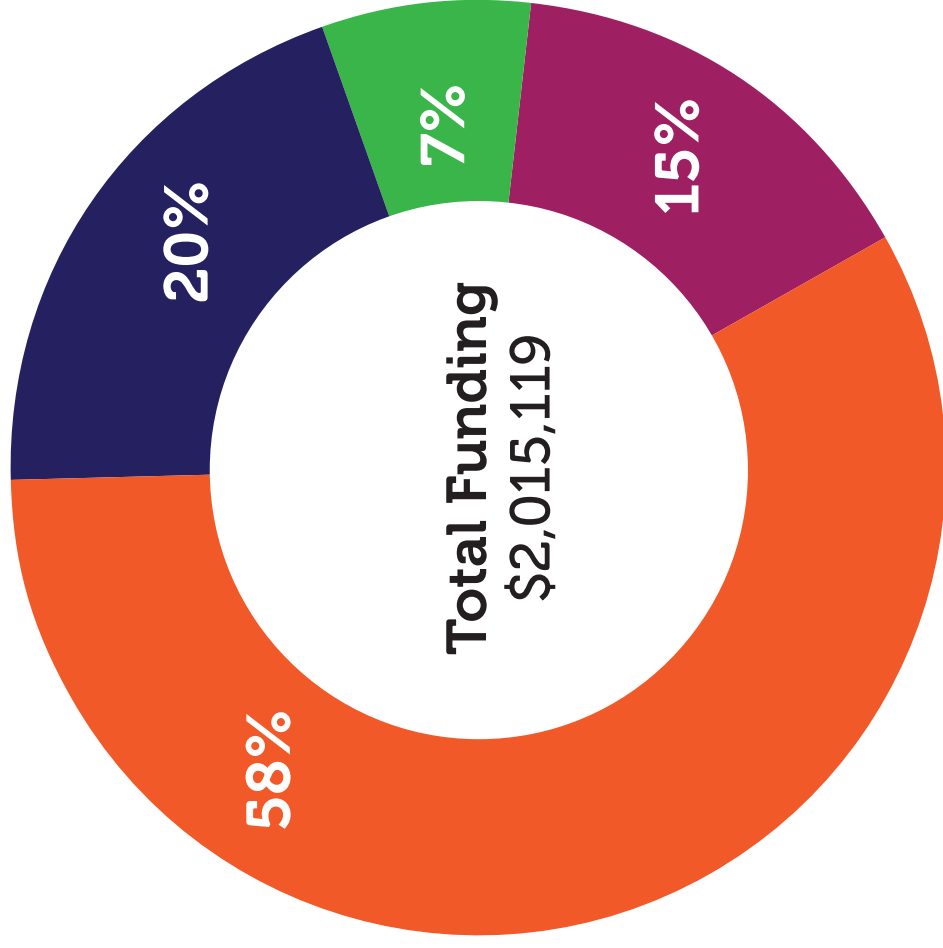
State: \$148,500 / Local: \$252,653
Total: \$401,153 – 20%

- **DHHS Child Care in Public Space**

Local: \$148,679 – 7%

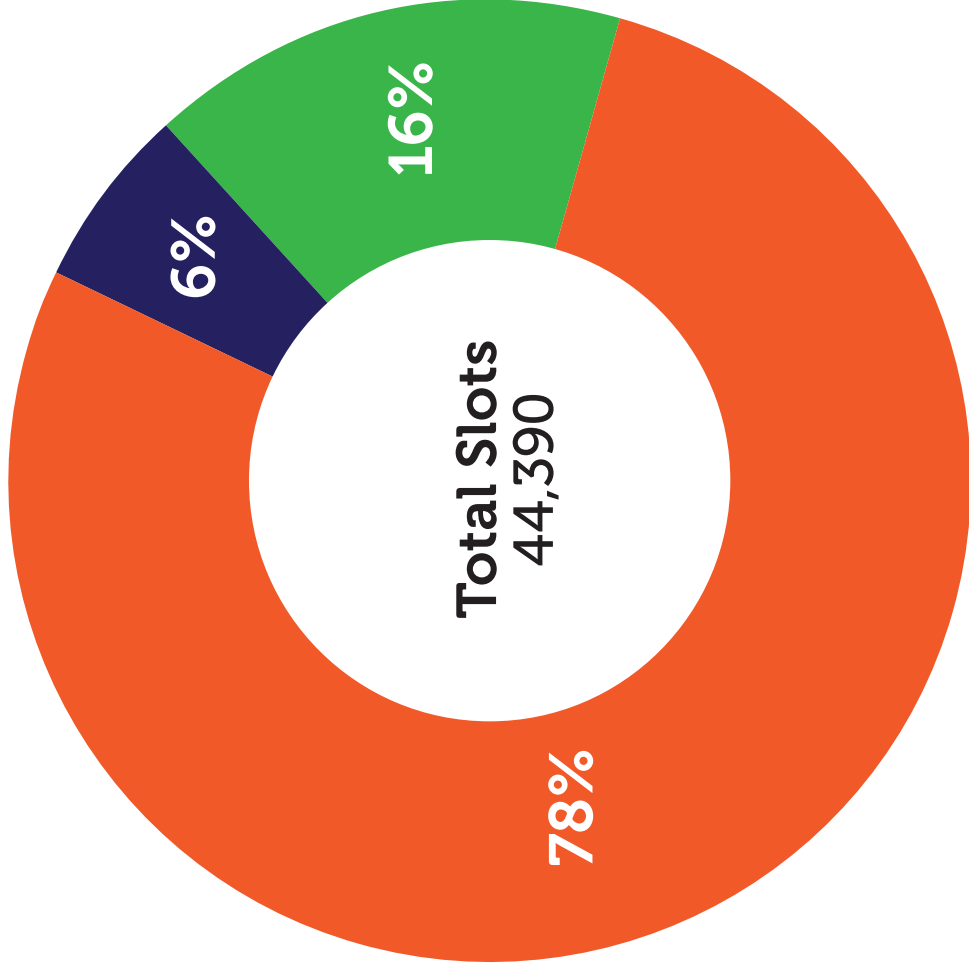
- **DHHS ChildLink**

Local: \$301,798 – 15%



Licensed Child Care Providers Paid by Parent Tuition

- **Child Care Centers**
486 Centers – 34,790 Slots – 78%
- **Letters of Compliance (LOC) Religious Organizations**
39 Sites – 2,622 Slots – 6%
- **Large Family and Family Child Care Providers**
922 Homes – 6,978 Slots – 16%



Early Care and Education Services and Funding – Key Definitions

Children with Disabilities

MCPs Preschool Special Education

Provides preschool special education services for children ages 3 to 5 with identified disabilities in Montgomery County. All children have an Individualized Education Program (IEP) with learning goals and objectives based on needs identified through formal evaluation.

MCPs Child Find

Provides free developmental screenings for children from age 3 until kindergarten. It is also the single point of entry for families moving into Montgomery County whose preschool-age child was previously identified with a disability.

DHHS Montgomery County Infants & Toddlers Program

A collaborative effort between HHS, MCPs, private community agencies and Maryland Infants and Toddlers to provide assessment and ongoing early intervention services when there is a 25% delay in at least one area of a child's development, atypical development, or a high probability of delay due to a medical condition.

MCPs Preschool Extended School Year

Individualized extension of specific services beyond the regular school year, designed to meet the specific goals included in a student's Individualized Education Program (IEP).

Low-Income Families

DHHS Head Start

Federal program that provides comprehensive developmental services for low-income preschool children ages 3 to 5 and social services for their families. Head Start provides services in four areas: education, health, parent involvement and social services. Grants are awarded to local public or private non-profit agencies.

Early Head Start

Serves low-income pregnant women and families with infants and toddlers. This family-centered, community-based program is designed to enhance children's physical, social, emotional and intellectual development. Early Head Start supports parents in fulfilling their parental roles and helps them move toward economic independence. Participation is determined based on referrals by local entities and conducted at three sites: CentroNia, Lourie Center, and Family Services Inc.

Working Parent Assistance Program

Locally funded, needs-based subsidy for child care support administered by DHHS.

Child Care Subsidy Program

Child Care Subsidy Program (CCSP) offers assistance in paying for child care costs to eligible families. CCSP consists of two child care subsidy programs: the State Child Care Subsidy Program and the County Working Parents Assistance Program. Parents submit one application that is assessed for eligibility for both programs. This program is administered by DHHS.

Maryland Family Network (MFN) / Family Support Center

MFN's mission is to ensure that young children and their families have the resources to learn and succeed. The agency leads two statewide networks: Family Support Centers and Child Care Resource Centers.

Judy Centers

State grant funded Judy Centers provide early childhood education and support services for children birth through kindergarten who reside in specific Title I school districts. There are two centers in Montgomery County.

MCPs PreKindergarten

Offers a high-quality educational experience to income-eligible children in order to prepare them with the foundational knowledge and skills necessary for school success in kindergarten and beyond. There are 109 Pre-K classes throughout Montgomery County.

County-funded PreKindergarten (CentroNia)

Montgomery County provides direct support to one early childhood education provider for Pre-K services to low-income children. The program operates eight hours/day to serve 70 children (20 3-year-olds and 50 4-year olds).

Preschool Development Grants

These Federal grants support states to build, develop, and expand voluntary, high-quality preschool programs at a local level for children from low- and moderate-income families. Development grants are for states that currently serve less than 10% of 4-year-olds and have not received a Race to the Top – Early Learning Challenge (RTT-ELC) grant.

MCPs PreKindergarten Expansion Grants

Grants for states/local areas that currently serve 10% or more of 4-year-olds or have received a RTT-ELC grant to provide additional prekindergarten services.

Child Care Providers & Families

DHHS Child Care Resource and Referral Center

Assists parents in locating licensed child care; provides technical assistance (information and expert advice) and resources for current and prospective child care providers in both family child care homes and child care centers; provides training for child care professionals to expand their knowledge of early childhood and best practices; collects data that documents the child care needs of families and employers as well as the child care delivery system.

DHHS Early Childhood Mental Health Consultation Services

Part of the full services provided through DHHS ChildLink. This program teams mental health professionals with licensed Early Care and Education (ECE) providers and families. The program builds the capacity of ECE providers to understand the influence of relationships and interactions on young children's social and emotional development and develops individualized strategies to create positive environments and foster nurturing interactions to reduce challenging behaviors.

DHHS Child Care in Public Space

The County is responsible for making available public facilities for child care and encouraging planned child care facilities in new public buildings. Note: DHHS and MCPs both have their own processes for bidding on use of school spaces (in addition to Community Use of Public Facilities).

DHHS ChildLink

ChildLink serves Montgomery County as a single point of entry to help parents and caregivers, including child care providers, reach the services and resources they need for their young children, birth to age 5.